

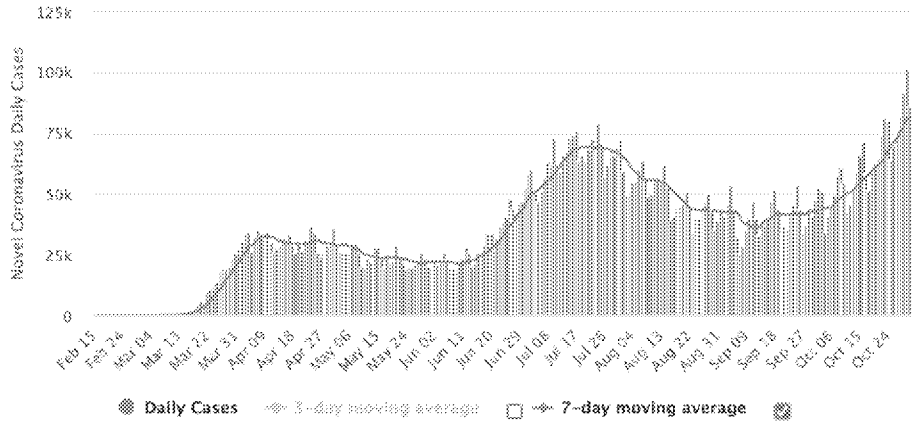
1 November 2020

1. We are entering the most concerning and most deadly phase of this pandemic, the most community spread, the most rapid acceleration of hospitalizations both overwhelming of community urban and rural hospitals, inadequate human capacity, inability to load balance and crisis care of all patients including non-COVID patients leading to increasing mortality
2. We need much more aggressive action from messaging, to testing, to surging personnel around the country prior to the crisis point
3. Test positivity rates continue to rise dramatically across the country - the weekly number of tests performed is flat
4. Cases are rapidly rising in nearly 30% of all USA counties the highest number of county hotspots we have seen with this pandemic
5. 14 States have both red category test positivity and cases; 9 States are in the orange zone for test positivity and red for cases (23 total)
6. Despite weekend reporting significant cases reported from populous states of TX, WI, MN, MI, OH, IN, GA, NC
7. Fatality rates in people over 70 remains at 11%. Increased access to novel therapeutics is critical.
8. Cases will surpass 100K this week because the core mitigation efforts and targeted testing for asymptomatic infection are not occurring resulting in continued and escalating community spread leading to increasing hospitalizations and fatalities.
9. Expanded strategic use of the Ag tests will be critical to controlling the current surge : these tests must be used for all individuals in all states with test positive rates over 5% independent of symptoms — requiring use in symptomatic clients is preventing adequate testing and control of the pandemic.
10. Detection of presymptomatic, mild and asymptomatic cases will require both sentinel surveillance of community populations (community college students, major industries, K-12 teachers etc) as well as routine community focused testing of under 40 yo to find and isolate these contagious individuals. We need to use Ag tests more widely..
11. Aggressive testing of the contagious but asymptomatic population with isolation effectively contained and mitigated spread prior to infection of the more vulnerable community members. Routine testing will be essential in multigenerational households especially in our Tribal Nations.
12. One Federal unified consistent messaging about uniform use of masks, physical distancing and hand washing with profound limitation on indoor gatherings especially with family and friends is essential at this time point — this is about empowerment Americans with the knowledge and data for decision making to prevent community spread and save lives. **University through aggressive testing and isolation had 97% less infections and less isolation of all student**
13. From Universities we have learned how to test strategically to prevent spread, from our dialogue in states we have learned how to craft messages for impact — what is needed now is translation of this knowledge into action for impact. Public health officers in the field are exhausted and will need support and a clear road map.

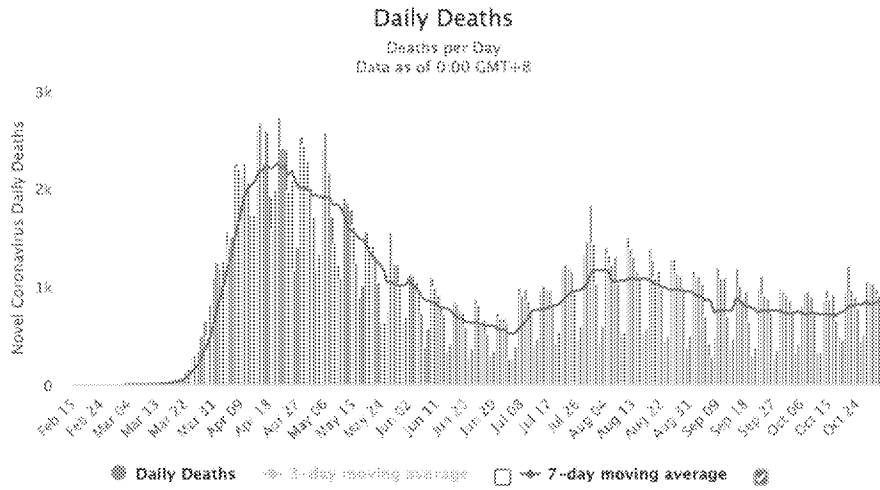
Daily New Cases in the United States

Daily New Cases

Cases per Day
Data as of 0:00 GMT+0

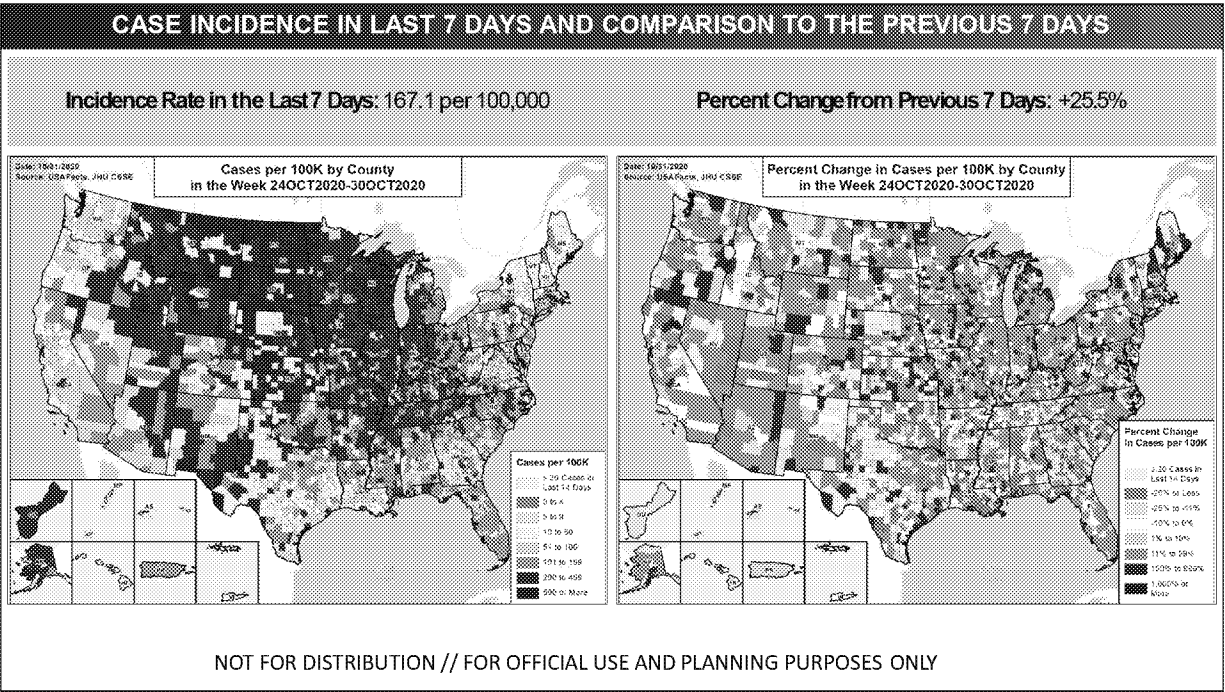


Daily New Deaths in the United States



Despite low weekend reporting significant cases reported in TX, IL, NC, GA, WI, OH, MI, IN, MN, IA

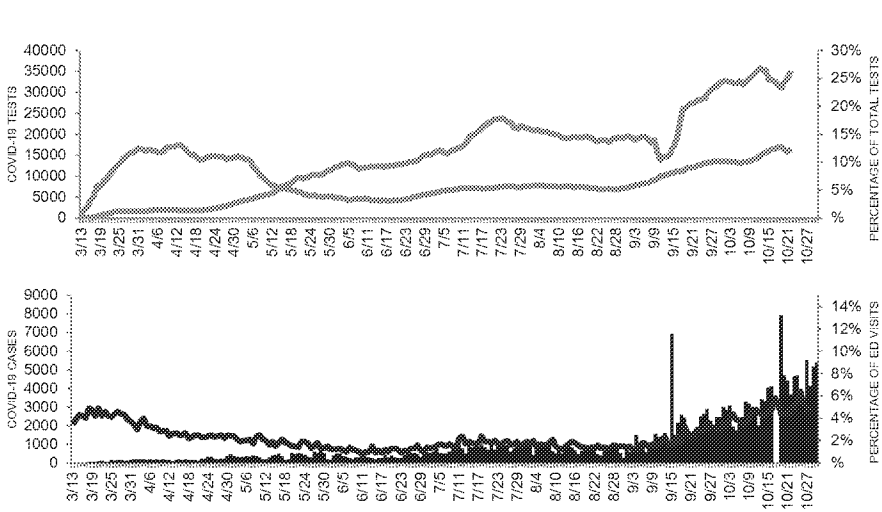
State	Total Cases	New Cases	Total Deaths	New Deaths	Total Recovered	Active Cases	Total Cases per 100 pop	Deaths per 100 pop	Total Tests	Tests per 100 pop	Population	
USA Total	9,422,180	498,268	58,172	2814	6,992,428	2,429,752	28,408	718	144,884,274	105,905		
Alaska	958,714	+6,783	18,281	+17	798,795	159,919	32,596	841	8,583,170	309,188	28,965,283	
Alabama	953,811	+5,287	17,668	+18	478,776	475,035	23,621	647	18,509,317	420,769	29,512,293	
Arizona	682,647	+3,351	16,766	+10	567,728	214,919	37,368	781	8,878,848	464,837	21,877,787	
Arkansas	544,070	+1,878	33,989	+17	416,515	90,387	27,698	1,731	14,827,719	769,780	19,893,561	
California	418,858	+7,896	10,040	+16	281,188	137,670	32,873	782	7,729,545	610,063	12,871,823	
Colorado	566,786	+6,265	7,879	+18	268,533	298,253	33,891	752	8,894,503	396,893	10,617,623	
Connecticut	274,626	+3,898	4,576	+10	251,811	22,815	38,846	28,193	4,049,898	585,852	10,888,984	
Delaware	260,672	+1,184	3,263	+17	231,667	29,005	39,170	891	3,657,609	538,497	6,828,174	
District of Columbia	248,948	+1,901	6,879	+16	41,158	207,790	33,780	821	3,991,090	397,298	7,278,747	
Florida	242,723	+1,212	16,879	+18	161,328	81,395	27,327	1,850	4,838,198	528,297	9,882,196	
Georgia	228,570	+5,276	2,031	+10	178,098	50,472	38,707	348	2,651,008	352,431	5,828,434	
Hawaii	215,713	+5,886	6,330	+17	166,884	48,829	19,484	638	4,459,339	381,486	11,885,160	
Idaho	212,816	+2,280	6,898	+10	158,160	54,656	18,824	984	2,792,817	215,040	12,801,865	
Illinois	197,806	+4,018	7,896	+18	114,925	82,881	19,767	771	3,292,297	326,925	9,986,887	
Indiana	162,266	+1,798	2,967	+10	81,005	81,261	39,216	596	1,419,949	287,761	4,968,168	
Iowa	161,254	+8,246	3,184	+17	85,368	75,886	31,188	814	2,547,874	431,451	8,127,428	
Kansas	182,276		5,919		168,354	13,922	7,717	23,208	1,273	2,798,292	595,996	4,648,794
Kentucky	161,196	+1,651	5,953	+11	20,008	141,188	21,288	438	2,813,250	361,936	8,535,518	
Louisiana	178,268	+3,886	4,382	+10	121,513	56,755	29,642	948	2,919,617	432,341	8,732,218	
Maine	176,612	+1,018	5,935	+10	95,068	81,544	34,362	754	1,895,591	387,196	3,146,714	
Maryland	156,576	+1,450	6,991	+11	127,054	29,522	23,097	1,490	3,028,025	645,983	6,882,503	
Massachusetts	148,472	+3,007	2,911	+10	127,362	21,110	26,527	445	2,899,304	920,466	5,838,932	
Michigan	145,261	+967	4,147	+10	8,181	137,080	74,031	886	3,422,582	966,194	8,045,660	
Minnesota	127,872	+8,788	1,716	+11	63,362	64,510	40,561	594	873,592	306,692	3,185,676	
Mississippi	122,782	+1,267	1,537	+11	168,282	15,135	31,024	358	1,831,701	412,614	3,986,971	
Missouri	120,160	+824	3,294	+18	101,385	18,775	49,574	1,120	1,646,832	351,651	2,978,148	



CASE, TESTING, AND SYNDROMIC SURVEILLANCE DATA
COMBINED VIEW: ALL STATES AND DC

Metric	Green	Light Green	Yellow	Orange	Red	Description
COVID-19 SNAPSHOT						
POSITIVITY RATE	$x < 3$	$3 \leq x < 5$	$5 \leq x < 8$	$8 \leq x \leq 10$	$x > 10$	Percentage of positive test results over the last 7 days of data
NEW CASES PER 100K / DAY	$x < 2$	$2 \leq x \leq 3$	$3 < x < 7$	$7 \leq x \leq 14$	$x > 14$	Daily average of new cases over the last 7 days per 100,000 people
TESTING PER 100K / DAY	$x > 286$	$286 \geq x > 143$	$143 \geq x > 107$	$107 \geq x \geq 71$	$x < 71$	Daily average of new tests over the last 7 days per 100,000 people
BED UTILIZATION	$x < 70$		$70 \leq x \leq 80$	$x > 80$		Daily average bed utilization over the last 3 days
WEEK-ON-WEEK CHANGES						
POSITIVITY RATE	$x < -2.0$	$-2.0 \leq x < -0.5$	$-0.5 \leq x \leq 0$	$0 < x \leq 0.5$	$x > 0.5$	Change in positivity rate from the last week to second to last week of data
INCIDENCE	$x < -25$	$-25 \leq x < -10$	$-10 \leq x \leq 0$	$0 < x \leq 10$	$x > 10$	Change in new cases from the last week to second to last week of data
TESTING PER 100K / DAY	$x > 25$	$25 \geq x > 10$	$10 \geq x \geq 0$	$0 > x \geq -10$	$x < -10$	Change in testing from the last week to second to last week of data
BED UTILIZATION	$x < -5$		$-5 \leq x \leq 5$	$x > 5$		Change in bed utilization from the last week to second to last week of data
RISK FACTORS						
POPULATION DENSITY	$x < 100$		$100 \leq x \leq 300$	$x > 300$		Number of people per mile from 2019 census estimate
% OVER 65	$x < 20$		$20 \leq x \leq 24$	$x > 24$		Percent of population over 65 from 2019 census estimate
CRUDE CVD PREVALENCE	$x < 3.0$		$3.0 \leq x \leq 4.0$	$x > 4.0$		Calculated from 2017 CDC behavioral risk factors

TRENDS IN WISCONSIN



- Daily Tests Completed (7-day avg.)
- % Positivity Rate (by result date 7-day avg.)
- Daily COVID-19 Cases
- Daily ED visits for CLI reported to CDC as a % of all ED visits

COVID-19 SNAPSHOT

POSITIVITY RATE	14.2%
NEW CASES PER 100K / DAY	8 (week ending 10/27)
TESTING PER 100K / DAY	56.1
BED UTILIZATION	68%

WEEK-ON-WEEK CHANGES

POSITIVITY RATE	+0.1%
INCIDENCE	+2%
TESTING PER 100K / DAY	+7%
BED UTILIZATION	+1%

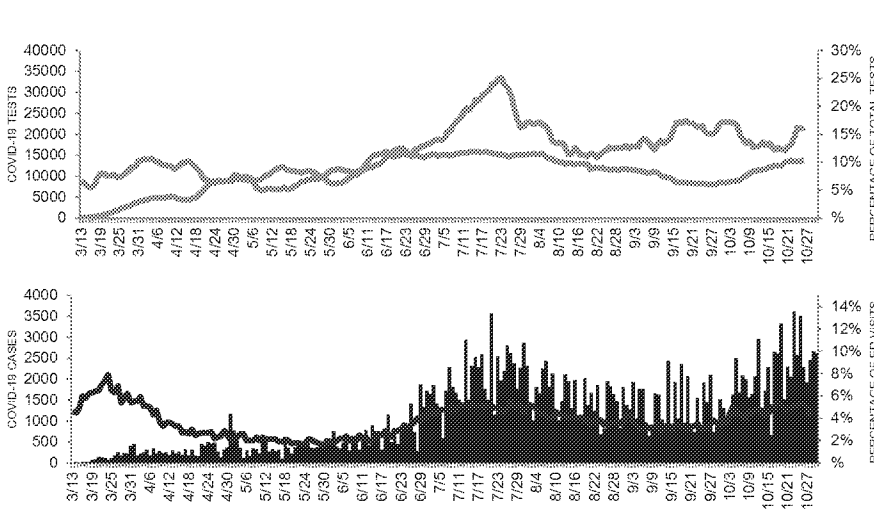
RISK FACTORS

POPULATION DENSITY	107 per sq mi
% SENIORS	17%
CRUDE CVD PREVALENCE	3.7%

Sources: Cases - USAFacts.org; ED visits - ESSENCE; COVID-19 test results - CELR (COVID Electronic Lab Reporting) state health department-reported data and HHS Protect laboratory data (provided directly to Federal Government from public health labs, hospital labs, and commercial labs)
 Testing & hospital data based on best available data in HHS Protect

* Most recent several days of testing data is incomplete until all test results come in; testing date is by date the result was received

TRENDS IN TENNESSEE



- ▒ Daily Tests Completed (7-day avg.)
- ▒ % Positivity Rate (by result date 7-day avg.)
- ▒ Daily COVID-19 Cases
- ▒ Daily ED visits for CLI reported to CDC as a % of all ED visits

COVID-19 SNAPSHOT

POSITIVITY RATE	10.3%
NEW CASES PER 100K / DAY	26 (week ending 10/27)
TESTING PER 100K / DAY	257 (week ending 10/27)
BED UTILIZATION	74%

WEEK-ON-WEEK CHANGES

POSITIVITY RATE	+0.2%
INCIDENCE	+0%
TESTING PER 100K / DAY	-1%
BED UTILIZATION	-1%

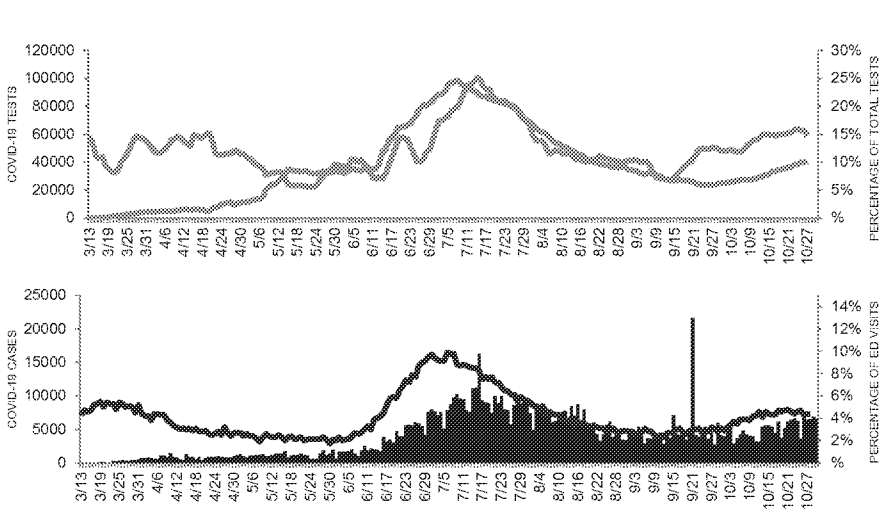
RISK FACTORS

POPULATION DENSITY	166 per sq mi
% SENIORS	17%
CRUDE CVD PREVALENCE	24%

Sources: Cases - USAFacts.org; ED visits - ESSENCE; COVID-19 test results - CELR (COVID Electronic Lab Reporting) state health department-reported data and HHS Protect laboratory data (provided directly to Federal Government from public health labs, hospital labs, and commercial labs)
 Testing & hospital data based on best available data in HHS Protect

* Most recent several days of testing data is incomplete until all test results come in; testing date is by date the result was received

TRENDS IN TEXAS



- Daily Tests Completed (7-day avg.)
- % Positivity Rate (by result date 7-day avg.)
- Daily COVID-19 Cases
- Daily ED visits for CLI reported to CDC as a % of all ED visits

COVID-19 SNAPSHOT

POSITIVITY RATE	10.1%
NEW CASES PER 100K / DAY	27 (weekly avg.)
TESTING PER 100K / DAY	204 (weekly avg.)
BED UTILIZATION	60%

WEEK-ON-WEEK CHANGES

POSITIVITY RATE	-1.2%
INCIDENCE	+43%
TESTING PER 100K / DAY	-1%
BED UTILIZATION	-16%

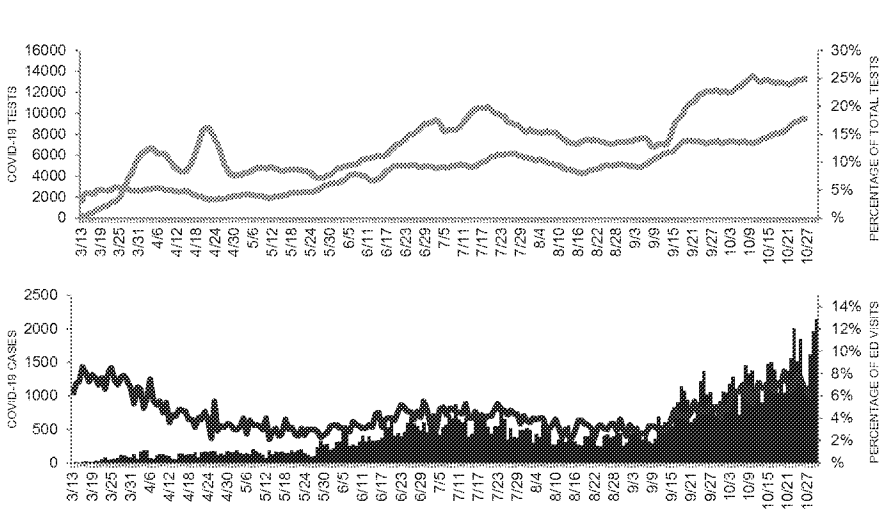
RISK FACTORS

POPULATION DENSITY	111 per sq mi
% SENIORS	13%
CRUDE CVD PREVALENCE	3.3%

Sources: Cases - USAFacts.org; ED visits - ESSENCE; COVID-19 test results - CELR (COVID Electronic Lab Reporting) state health department-reported data and HHS Protect laboratory data (provided directly to Federal Government from public health labs, hospital labs, and commercial labs)
 Testing & hospital data based on best available data in HHS Protect

* Most recent several days of testing data is incomplete until all test results come in; testing date is by date the result was received

TRENDS IN UTAH



- ▒ Daily Tests Completed (7-day avg.)
- ▒ % Positivity Rate (by result date 7-day avg.)
- ▒ Daily COVID-19 Cases
- ▒ Daily ED visits for CLI reported to CDC as a % of all ED visits

COVID-19 SNAPSHOT

POSITIVITY RATE	17.7%
NEW CASES PER 100K / DAY	2.1 (week ending 10/27)
TESTING PER 100K / DAY	15.1 (week ending 10/27)
BED UTILIZATION	1%

WEEK-ON-WEEK CHANGES

POSITIVITY RATE	+2.2%
INCIDENCE	+18%
TESTING PER 100K / DAY	+3%
BED UTILIZATION	-1%

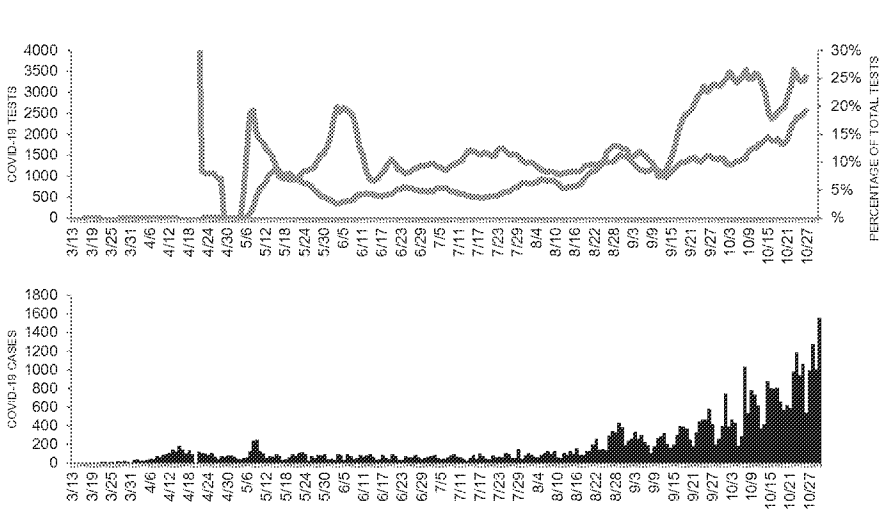
RISK FACTORS

POPULATION DENSITY	99 per sq. mi.
% SENIORS	11%
CRUDE CVD PREVALENCE	2.7%

Sources: Cases - USAFacts.org; ED visits - ESSENCE; COVID-19 test results - CELR (COVID Electronic Lab Reporting) state health department-reported data and HHS Protect laboratory data (provided directly to Federal Government from public health labs, hospital labs, and commercial labs)
 Testing & hospital data based on best available data in HHS Protect

* Most recent several days of testing data is incomplete until all test results come in; testing date is by date the result was received

TRENDS IN SOUTH DAKOTA



Daily Tests Completed (7-day avg.)
 % Positivity Rate (by result date 7-day avg.)
 Daily COVID-19 Cases

COVID-19 SNAPSHOT

POSITIVITY RATE	14.2%
NEW CASES PER 100K / DAY	11.9 (weekly avg)
TESTING PER 100K / DAY	14.7 (weekly avg)
BED UTILIZATION	68%

WEEK-ON-WEEK CHANGES

POSITIVITY RATE	+0.2%
INCIDENCE	+6%
TESTING PER 100K / DAY	+1%
BED UTILIZATION	+2%

RISK FACTORS

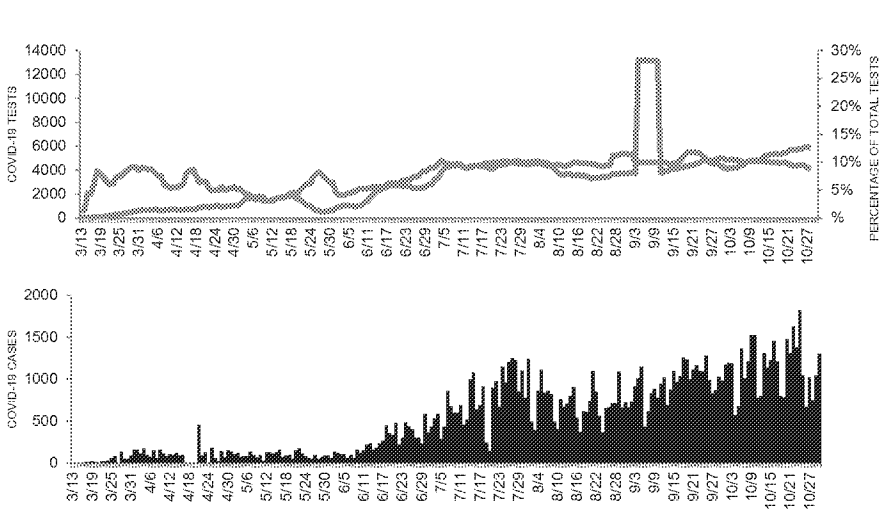
POPULATION DENSITY	12 per sq mi
% SENIORS	17%
CRUDE CVD PREVALENCE	4.2%

Sources: Cases - USAFacts.org; ED visits - ESSENCE; COVID-19 test results - CELR (COVID Electronic Lab Reporting) state health department-reported data and HHS Protect laboratory data (provided directly to Federal Government from public health labs, hospital labs, and commercial labs)
 Testing & hospital data based on best available data in HHS Protect

* Most recent several days of testing data is incomplete until all test results come in; testing date is by date the result was received

Not enough CLI syndromic surveillance data to display

TRENDS IN OKLAHOMA



Sources: Cases - USAFacts.org; ED visits - ESSENCE; COVID-19 test results - CELR (COVID Electronic Lab Reporting) state health department-reported data and HHS Protect laboratory data (provided directly to Federal Government from public health labs, hospital labs, and commercial labs)
 Testing & hospital data based on best available data in HHS Protect

Daily Tests Completed (7-day avg.)
 % Positivity Rate (by result date 7-day avg.)
 Daily COVID-19 Cases

COVID-19 SNAPSHOT

POSITIVITY RATE	14.9%
NEW CASES PER 100K / DAY	28 (weekly avg.)
TESTING PER 100K / DAY	104 (weekly avg.)
BED UTILIZATION	68%

WEEK-ON-WEEK CHANGES

POSITIVITY RATE	+0.7%
INCIDENCE	-11%
TESTING PER 100K / DAY	-11%
BED UTILIZATION	-1%

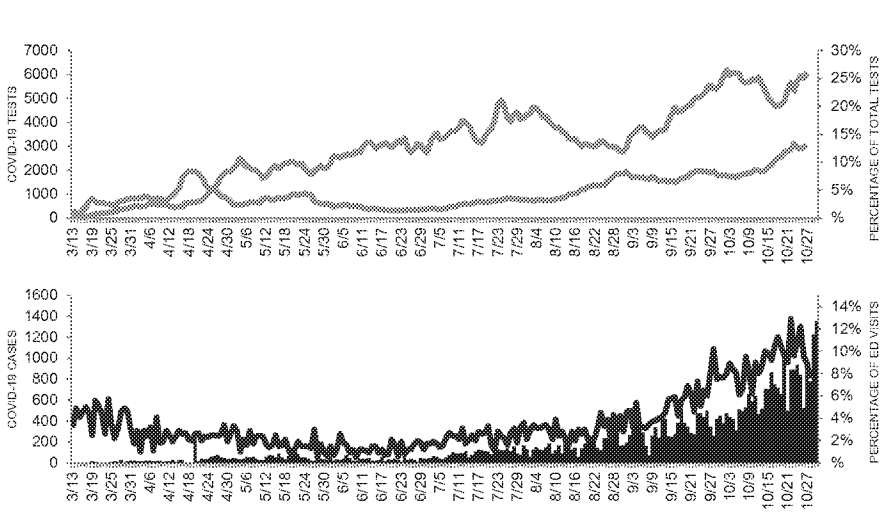
RISK FACTORS

POPULATION DENSITY	58 per sq mi
% OVER 65	16%
CRUDE CVD PREVALENCE	232%

* Most recent several days of testing data is incomplete until all test results come in; testing date is by date the result was received

Not enough CLI syndromic surveillance data to display

TRENDS IN NORTH DAKOTA



- Daily Tests Completed (7-day avg.)
- % Positivity Rate (by result date 7-day avg.)
- Daily COVID-19 Cases
- Daily ED visits for CLI reported to CDC as a % of all ED visits

COVID-19 SNAPSHOT

POSITIVITY RATE	14.3%
NEW CASES PER 100K / DAY	12.9 (weekly avg)
TESTING PER 100K / DAY	19.1 (weekly avg)
BED UTILIZATION	76%

WEEK-ON-WEEK CHANGES

POSITIVITY RATE	+1.1%
INCIDENCE	+23%
TESTING PER 100K / DAY	+24%
BED UTILIZATION	-1%

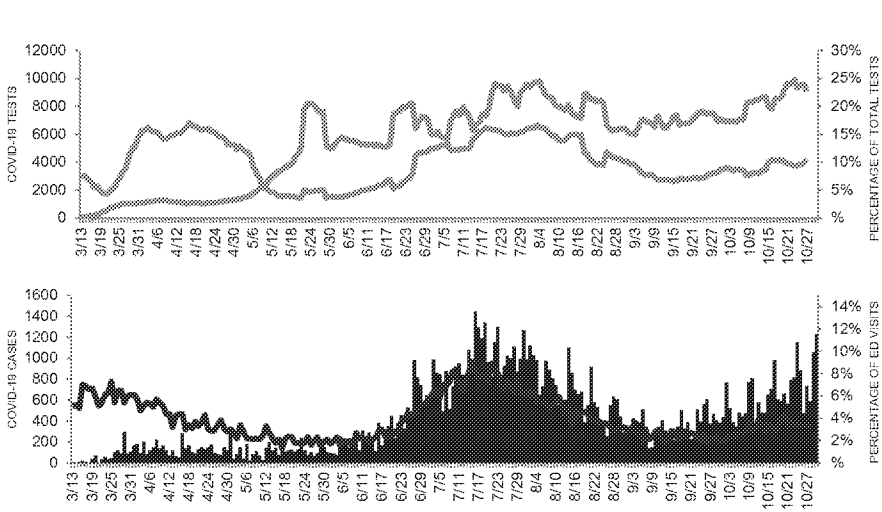
RISK FACTORS

POPULATION DENSITY	11 per sq mi
% SENIORS	16%
CRUDE CVD PREVALENCE	3.8%

Sources: Cases - USAFacts.org; ED visits - ESSENCE; COVID-19 test results - CELR (COVID Electronic Lab Reporting) state health department-reported data and HHS Protect laboratory data (provided directly to Federal Government from public health labs, hospital labs, and commercial labs)
 Testing & hospital data based on best available data in HHS Protect

* Most recent several days of testing data is incomplete until all test results come in; testing date is by date the result was received

TRENDS IN NEVADA



- ▒ Daily Tests Completed (7-day avg.)
- ▒ % Positivity Rate (by result date 7-day avg.)
- ▒ Daily COVID-19 Cases
- ▒ Daily ED visits for CLI reported to CDC as a % of all ED visits

COVID-19 SNAPSHOT

POSITIVITY RATE	18.4%
NEW CASES PER 100K / DAY	28 (week ending 10/27)
TESTING PER 100K / DAY	152 (week ending 10/27)
BED UTILIZATION	74%

WEEK-ON-WEEK CHANGES

POSITIVITY RATE	+0.2%
INCIDENCE	+2%
TESTING PER 100K / DAY	-2%
BED UTILIZATION	+0%

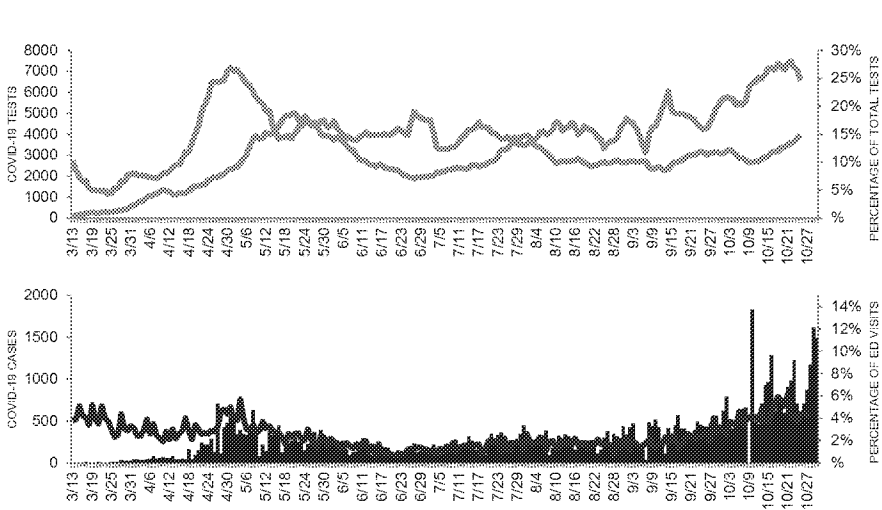
RISK FACTORS

POPULATION DENSITY	28 per sq. mi.
% SENIORS	16%
CRUDE CVD PREVALENCE	4.2%

Sources: Cases - USAFacts.org; ED visits - ESSENCE; COVID-19 test results - CELR (COVID Electronic Lab Reporting) state health department-reported data and HHS Protect laboratory data (provided directly to Federal Government from public health labs, hospital labs, and commercial labs)
 Testing & hospital data based on best available data in HHS Protect

* Most recent several days of testing data is incomplete until all test results come in; testing date is by date the result was received

TRENDS IN NEBRASKA



- Daily Tests Completed (7-day avg.)
- % Positivity Rate (by result date 7-day avg.)
- Daily COVID-19 Cases
- Daily ED visits for CLI reported to CDC as a % of all ED visits

COVID-19 SNAPSHOT

POSITIVITY RATE	14.2%
NEW CASES PER 100K / DAY	2.7 (weekly avg)
TESTING PER 100K / DAY	19.1 (weekly avg)
BED UTILIZATION	72%

WEEK-ON-WEEK CHANGES

POSITIVITY RATE	+1.2%
INCIDENCE	+25%
TESTING PER 100K / DAY	+11%
BED UTILIZATION	+1%

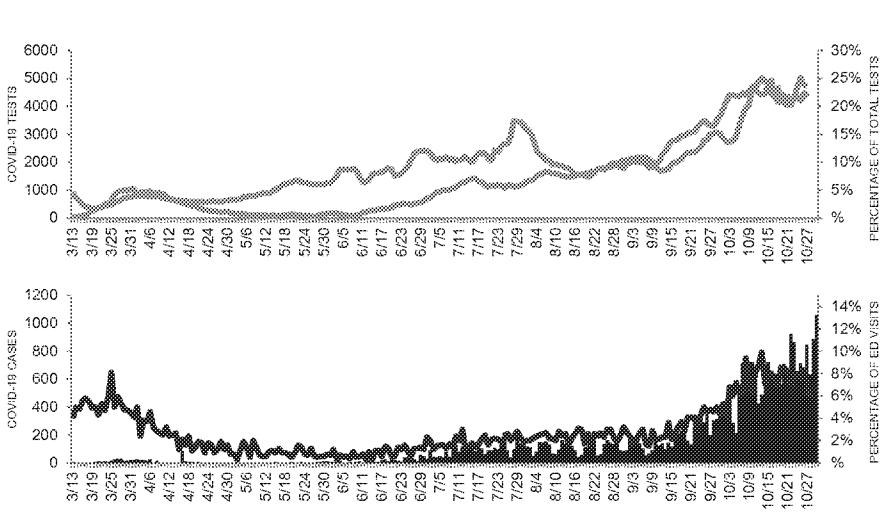
RISK FACTORS

POPULATION DENSITY	25 per sq mi
% SENIORS	16%
CRUDE CVD PREVALENCE	3.8%

Sources: Cases - USAFacts.org; ED visits - ESSENCE; COVID-19 test results - CELR (COVID Electronic Lab Reporting) state health department-reported data and HHS Protect laboratory data (provided directly to Federal Government from public health labs, hospital labs, and commercial labs)
 Testing & hospital data based on best available data in HHS Protect

* Most recent several days of testing data is incomplete until all test results come in; testing date is by date the result was received

TRENDS IN MONTANA



- Daily Tests Completed (7-day avg.)
- % Positivity Rate (by result date 7-day avg.)
- Daily COVID-19 Cases
- Daily ED visits for CLI reported to CDC as a % of all ED visits

COVID-19 SNAPSHOT

POSITIVITY RATE	23.7%
NEW CASES PER 100K / DAY	27 (week ending 10/27)
TESTING PER 100K / DAY	107 (week ending 10/27)
BED UTILIZATION	69%

WEEK-ON-WEEK CHANGES

POSITIVITY RATE	+2.1%
INCIDENCE	+43.5%
TESTING PER 100K / DAY	+5%
BED UTILIZATION	+0%

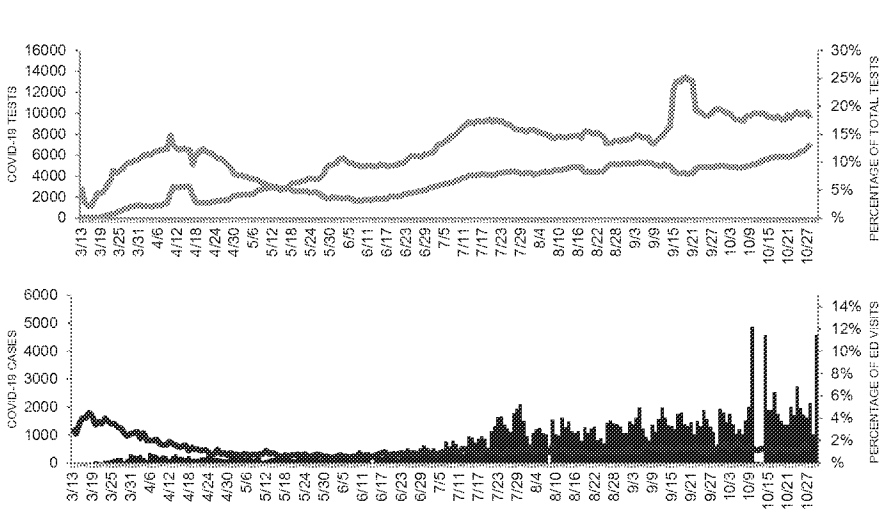
RISK FACTORS

POPULATION DENSITY	7 per sq mi
% SENIORS	19%
CRUDE CVD PREVALENCE	3.1%

Sources: Cases - USAFacts.org; ED visits - ESSENCE; COVID-19 test results - CELR (COVID Electronic Lab Reporting) state health department-reported data and HHS Protect laboratory data (provided directly to Federal Government from public health labs, hospital labs, and commercial labs)
 Testing & hospital data based on best available data in HHS Protect

* Most recent several days of testing data is incomplete until all test results come in; testing date is by date the result was received

TRENDS IN MISSOURI



- Daily Tests Completed (7-day avg.)
- % Positivity Rate (by result date 7-day avg.)
- Daily COVID-19 Cases
- Daily ED visits for CLI reported to CDC as a % of all ED visits

COVID-19 SNAPSHOT

POSITIVITY RATE	13.3%
NEW CASES PER 100K / DAY	37 (weekly avg.)
TESTING PER 100K / DAY	156 (weekly avg.)
BED UTILIZATION	6%

WEEK-ON-WEEK CHANGES

POSITIVITY RATE	+2.1%
INCIDENCE	+26%
TESTING PER 100K / DAY	-1%
BED UTILIZATION	+3%

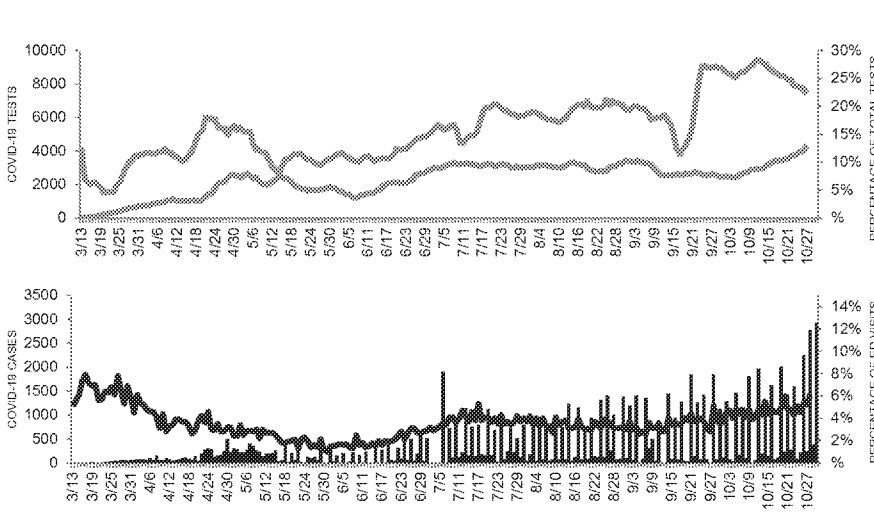
RISK FACTORS

POPULATION DENSITY	89 per sq. mi.
% SENIORS	17%
CRUDE CVD PREVALENCE	2.7%

Sources: Cases - USAFacts.org; ED visits - ESSENCE; COVID-19 test results - CELR (COVID Electronic Lab Reporting) state health department-reported data and HHS Protect laboratory data (provided directly to Federal Government from public health labs, hospital labs, and commercial labs)
 Testing & hospital data based on best available data in HHS Protect

* Most recent several days of testing data is incomplete until all test results come in; testing date is by date the result was received

TRENDS IN KANSAS



- Daily Tests Completed (7-day avg.)
- % Positivity Rate (by result date 7-day avg.)
- Daily COVID-19 Cases
- Daily ED visits for CLI reported to CDC as a % of all ED visits

COVID-19 SNAPSHOT

POSITIVITY RATE	13.0%
NEW CASES PER 100K / DAY	82 (weekly avg.)
TESTING PER 100K / DAY	255 (weekly avg.)
BED UTILIZATION	10%

WEEK-ON-WEEK CHANGES

POSITIVITY RATE	+2.3%
INCIDENCE	+5%
TESTING PER 100K / DAY	-12%
BED UTILIZATION	-1%

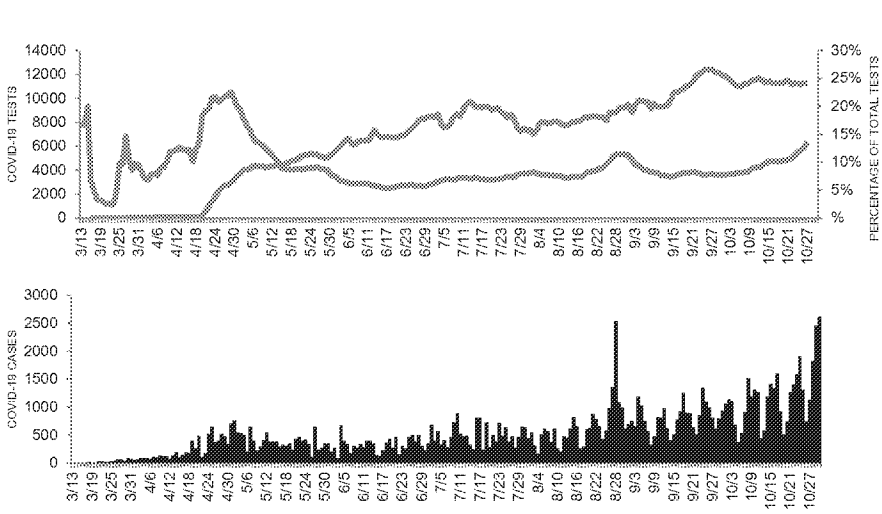
RISK FACTORS

POPULATION DENSITY	96 per sq. mi.
% SENIORS	16%
CRUDE CVD PREVALENCE	4.0%

Sources: Cases - USAFacts.org; ED visits - ESSENCE; COVID-19 test results - CELR (COVID Electronic Lab Reporting) state health department-reported data and HHS Protect laboratory data (provided directly to Federal Government from public health labs, hospital labs, and commercial labs)
 Testing & hospital data based on best available data in HHS Protect

* Most recent several days of testing data is incomplete until all test results come in; testing date is by date the result was received

TRENDS IN IOWA



 Daily Tests Completed (7-day avg.)
 % Positivity Rate (by result date 7-day avg.)
 Daily COVID-19 Cases

COVID-19 SNAPSHOT

POSITIVITY RATE	14.9%
NEW CASES PER 100K / DAY	2.4 (weekly avg)
TESTING PER 100K / DAY	15.7 (weekly avg)
BED UTILIZATION	65%

WEEK-ON-WEEK CHANGES

POSITIVITY RATE	+1.2%
INCIDENCE	+54%
TESTING PER 100K / DAY	+2%
BED UTILIZATION	+1%

RISK FACTORS

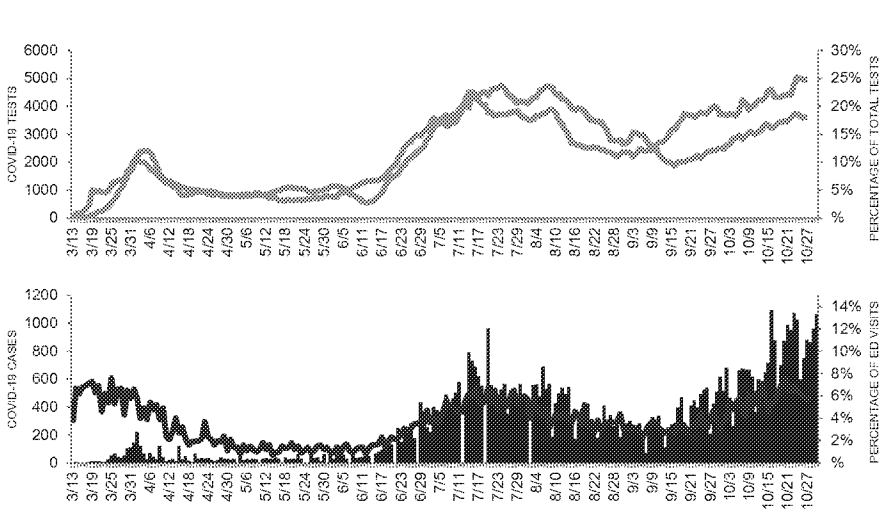
POPULATION DENSITY	56 per sq mi
% SENIORS	15%
CRUDE CVD PREVALENCE	4.0%

Sources: Cases - USAFacts.org; ED visits - ESSENCE; COVID-19 test results - CELR (COVID Electronic Lab Reporting) state health department-reported data and HHS Protect laboratory data (provided directly to Federal Government from public health labs, hospital labs, and commercial labs)
 Testing & hospital data based on best available data in HHS Protect

* Most recent several days of testing data is incomplete until all test results come in; testing date is by date the result was received

Not enough CLI syndromic surveillance data to display

TRENDS IN IDAHO



- Daily Tests Completed (7-day avg.)
- % Positivity Rate (by result date 7-day avg.)
- Daily COVID-19 Cases
- Daily ED visits for CLI reported to CDC as a % of all ED visits

COVID-19 SNAPSHOT

POSITIVITY RATE	18.1%
NEW CASES PER 100K / DAY	22 (weekly avg.)
TESTING PER 100K / DAY	283 (weekly avg.)
BED UTILIZATION	54%

WEEK-ON-WEEK CHANGES

POSITIVITY RATE	+0.7%
INCIDENCE	+3%
TESTING PER 100K / DAY	-13%
BED UTILIZATION	-1%

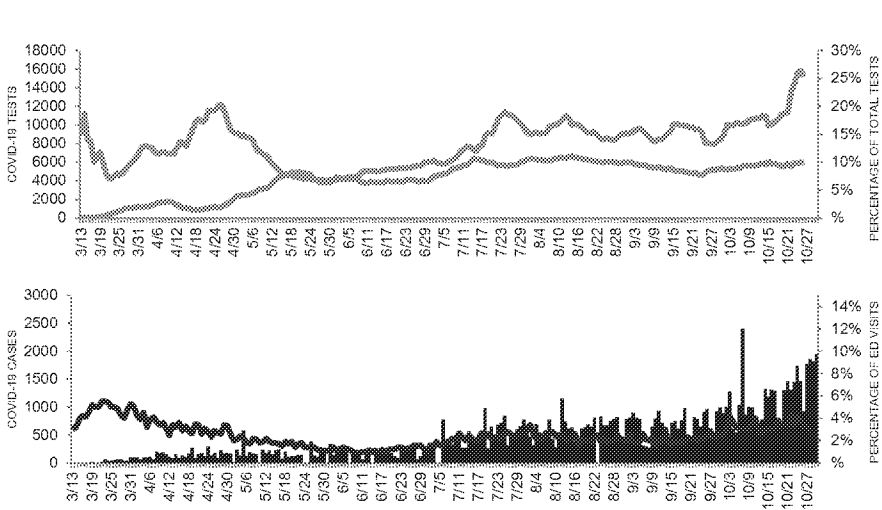
RISK FACTORS

POPULATION DENSITY	22 per sq. mi.
% SENIORS	16%
CRUDE CVD PREVALENCE	3.3%

Sources: Cases - USAFacts.org; ED visits - ESSENCE; COVID-19 test results - CELR (COVID Electronic Lab Reporting) state health department-reported data and HHS Protect laboratory data (provided directly to Federal Government from public health labs, hospital labs, and commercial labs)
 Testing & hospital data based on best available data in HHS Protect

* Most recent several days of testing data is incomplete until all test results come in; testing date is by date the result was received

TRENDS IN KENTUCKY



- Daily Tests Completed (7-day avg.)
- % Positivity Rate (by result date 7-day avg.)
- Daily COVID-19 Cases
- Daily ED visits for CLI reported to CDC as a % of all ED visits

COVID-19 SNAPSHOT

POSITIVITY RATE	10.0%
NEW CASES PER 100K / DAY	37 (week ending 10/27)
TESTING PER 100K / DAY	112.1 (week ending 10/27)
BED UTILIZATION	6%

WEEK-ON-WEEK CHANGES

POSITIVITY RATE	+0.2%
INCIDENCE	+4%
TESTING PER 100K / DAY	+1%
BED UTILIZATION	+1%

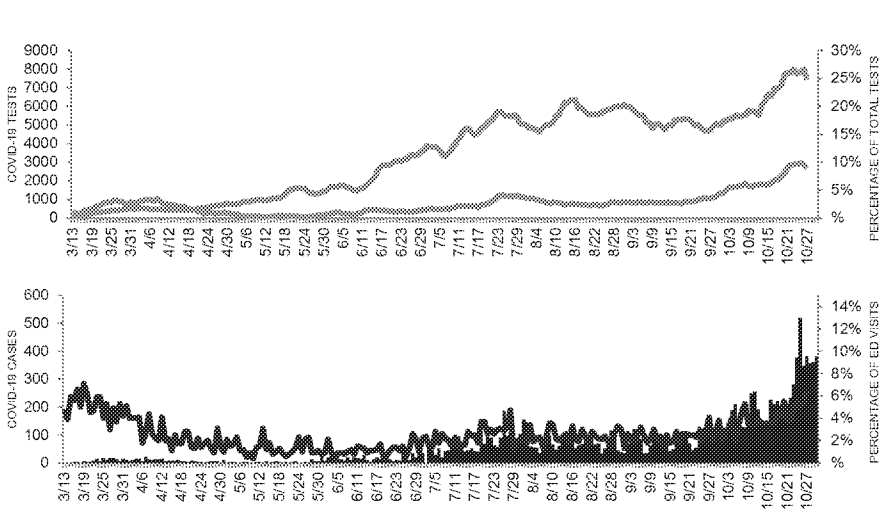
RISK FACTORS

POPULATION DENSITY	113 per sq mi
% SENIORS	17%
CRUDE CVD PREVALENCE	6.2%

Sources: Cases - USAFacts.org; ED visits - ESSENCE; COVID-19 test results - CELR (COVID Electronic Lab Reporting) state health department-reported data and HHS Protect laboratory data (provided directly to Federal Government from public health labs, hospital labs, and commercial labs)
 Testing & hospital data based on best available data in HHS Protect

* Most recent several days of testing data is incomplete until all test results come in; testing date is by date the result was received

TRENDS IN ALASKA



Daily Tests Completed (7-day avg.)
 % Positivity Rate (by result date 7-day avg.)
 Daily COVID-19 Cases
 Daily ED visits for CLI reported to CDC as a % of all ED visits

COVID-19 SNAPSHOT

POSITIVITY RATE	9.0%
NEW CASES PER 100K / DAY	0.2 (weekly 202)
TESTING PER 100K / DAY	13.7 (weekly 202)
BED UTILIZATION	66%

WEEK-ON-WEEK CHANGES

POSITIVITY RATE	+0.2%
INCIDENCE	+2.8%
TESTING PER 100K / DAY	-1%
BED UTILIZATION	+2%

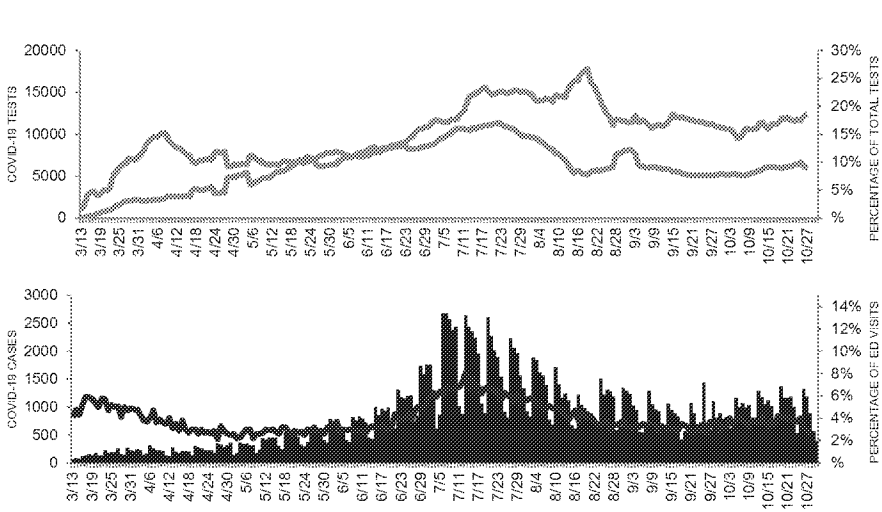
RISK FACTORS

POPULATION DENSITY	1 per sq mi
% SENIORS	13%
CRUDE CVD PREVALENCE	2.8%

Sources: Cases - USAFacts.org; ED visits - ESSENCE; COVID-19 test results - CELR (COVID Electronic Lab Reporting) state health department-reported data and HHS Protect laboratory data (provided directly to Federal Government from public health labs, hospital labs, and commercial labs)
 Testing & hospital data based on best available data in HHS Protect

* Most recent several days of testing data is incomplete until all test results come in; testing date is by date the result was received

TRENDS IN ALABAMA



- Daily Tests Completed (7-day avg.)
- % Positivity Rate (by result date 7-day avg.)
- Daily COVID-19 Cases
- Daily ED visits for CLI reported to CDC as a % of all ED visits

COVID-19 SNAPSHOT

POSITIVITY RATE	4.9%
NEW CASES PER 100K / DAY	27 (weekly avg.)
TESTING PER 100K / DAY	253 (weekly avg.)
BED UTILIZATION	76%

WEEK-ON-WEEK CHANGES

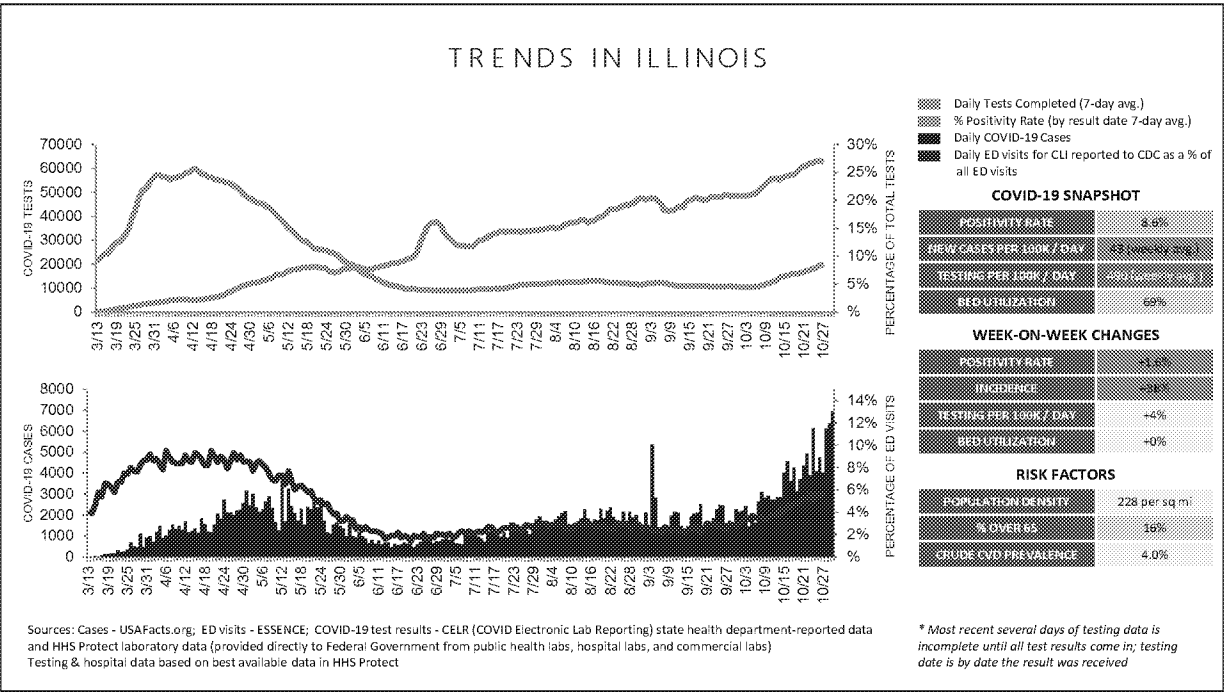
POSITIVITY RATE	-0.2%
INCIDENCE	-23%
TESTING PER 100K / DAY	+5%
BED UTILIZATION	+1%

RISK FACTORS

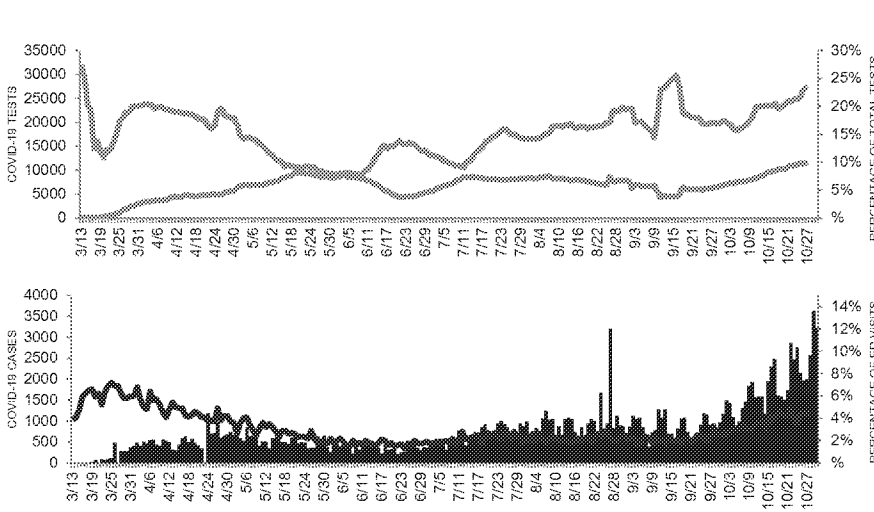
POPULATION DENSITY	97 per sq. mi.
% SEVERELY	17%
CRUDE CVD PREVALENCE	22%

Sources: Cases - USAFacts.org; ED visits - ESSENCE; COVID-19 test results - CELR (COVID Electronic Lab Reporting) state health department-reported data and HHS Protect laboratory data (provided directly to Federal Government from public health labs, hospital labs, and commercial labs)
 Testing & hospital data based on best available data in HHS Protect

* Most recent several days of testing data is incomplete until all test results come in; testing date is by date the result was received



TRENDS IN INDIANA



- Daily Tests Completed (7-day avg.)
- % Positivity Rate (by result date 7-day avg.)
- Daily COVID-19 Cases
- Daily ED visits for CLI reported to CDC as a % of all ED visits

COVID-19 SNAPSHOT

POSITIVITY RATE	10.0%
NEW CASES PER 100K / DAY	22 (week ending 10/27)
TESTING PER 100K / DAY	131 (week ending 10/27)
BED UTILIZATION	6%

WEEK-ON-WEEK CHANGES

POSITIVITY RATE	+1.2%
INCIDENCE	+24%
TESTING PER 100K / DAY	+16%
BED UTILIZATION	+2%

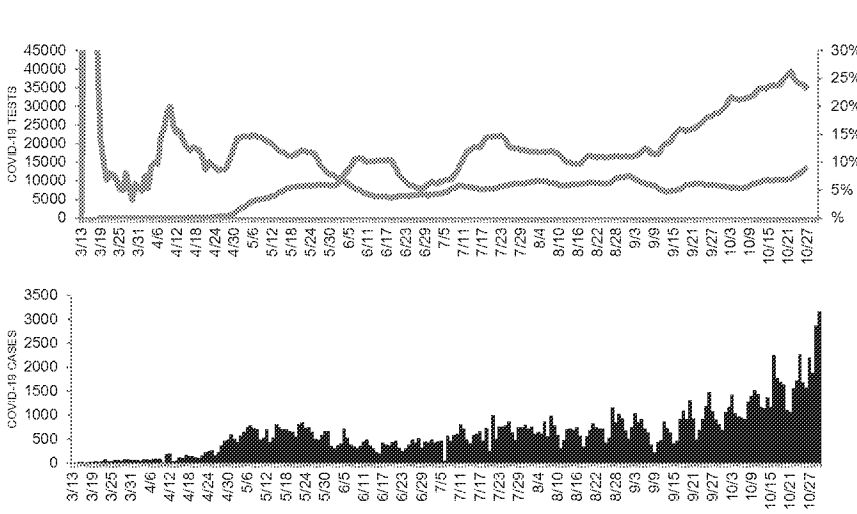
RISK FACTORS

POPULATION DENSITY	188 per sq mi
% SENIORS	16%
CRUDE CVD PREVALENCE	+1.2%

Sources: Cases - USAFacts.org; ED visits - ESSENCE; COVID-19 test results - CELR (COVID Electronic Lab Reporting) state health department-reported data and HHS Protect laboratory data (provided directly to Federal Government from public health labs, hospital labs, and commercial labs)
 Testing & hospital data based on best available data in HHS Protect

* Most recent several days of testing data is incomplete until all test results come in; testing date is by date the result was received

TRENDS IN MINNESOTA



Daily Tests Completed (7-day avg.)
 % Positivity Rate (by result date 7-day avg.)
 Daily COVID-19 Cases

COVID-19 SNAPSHOT

POSITIVITY RATE	9.1%
NEW CASES PER 100K / DAY	40 (week ending 10/27)
TESTING PER 100K / DAY	13.1 (week ending 10/27)
BED UTILIZATION	72%

WEEK-ON-WEEK CHANGES

POSITIVITY RATE	+2.3%
INCIDENCE	+44%
TESTING PER 100K / DAY	-6%
BED UTILIZATION	+2%

RISK FACTORS

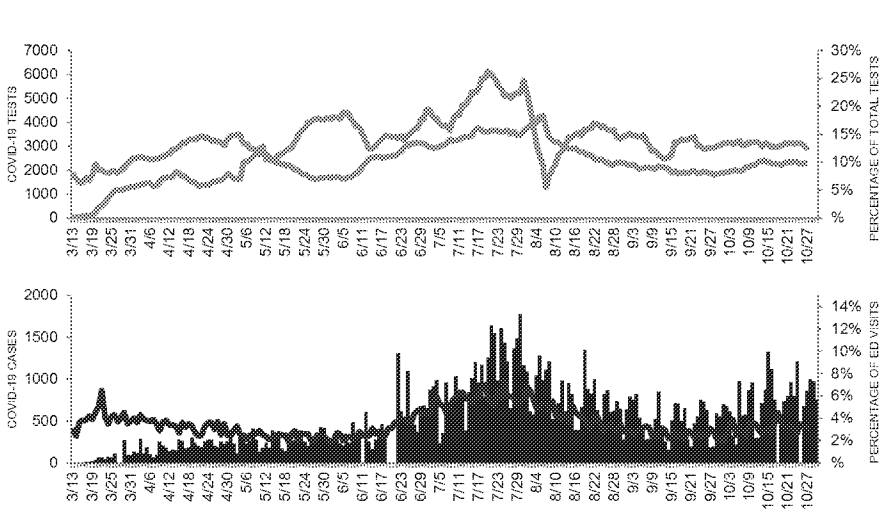
POPULATION DENSITY	71 per sq. mi.
% SENIORS	16%
CRUDE CVD PREVALENCE	3.4%

Sources: Cases - USAFacts.org; ED visits - ESSENCE; COVID-19 test results - CELR (COVID Electronic Lab Reporting) state health department-reported data and HHS Protect laboratory data (provided directly to Federal Government from public health labs, hospital labs, and commercial labs)
 Testing & hospital data based on best available data in HHS Protect

* Most recent several days of testing data is incomplete until all test results come in; testing date is by date the result was received

Not enough CLI syndromic surveillance data to display

TRENDS IN MISSISSIPPI



- Daily Tests Completed (7-day avg.)
- % Positivity Rate (by result date 7-day avg.)
- Daily COVID-19 Cases
- Daily ED visits for CLI reported to CDC as a % of all ED visits

COVID-19 SNAPSHOT

POSITIVITY RATE	9.8%
NEW CASES PER 100K / DAY	21 (weekly avg.)
TESTING PER 100K / DAY	95 (weekly avg.)
BED UTILIZATION	6%

WEEK-ON-WEEK CHANGES

POSITIVITY RATE	+0.1%
INCIDENCE	+18%
TESTING PER 100K / DAY	-6%
BED UTILIZATION	-2%

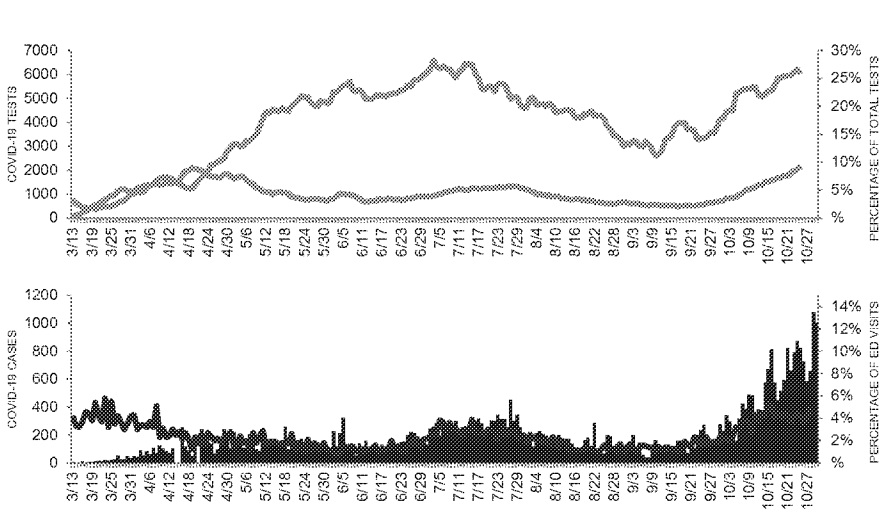
RISK FACTORS

POPULATION DENSITY	63 per sq. mi.
% SENIORS	16%
CRUDE CVD PREVALENCE	21%

Sources: Cases - USAFacts.org; ED visits - ESSENCE; COVID-19 test results - CELR (COVID Electronic Lab Reporting) state health department-reported data and HHS Protect laboratory data (provided directly to Federal Government from public health labs, hospital labs, and commercial labs)
Testing & hospital data based on best available data in HHS Protect

* Most recent several days of testing data is incomplete until all test results come in; testing date is by date the result was received

TRENDS IN NEW MEXICO



Daily Tests Completed (7-day avg.)
 % Positivity Rate (by result date 7-day avg.)
 Daily COVID-19 Cases
 Daily ED visits for CLI reported to CDC as a % of all ED visits

COVID-19 SNAPSHOT

POSITIVITY RATE	9.2%
NEW CASES PER 100K / DAY	22 (week ending 10/27)
TESTING PER 100K / DAY	247 (week ending 10/27)
BED UTILIZATION	66%

WEEK-ON-WEEK CHANGES

POSITIVITY RATE	+2.2%
INCIDENCE	+6%
TESTING PER 100K / DAY	+3%
BED UTILIZATION	-1%

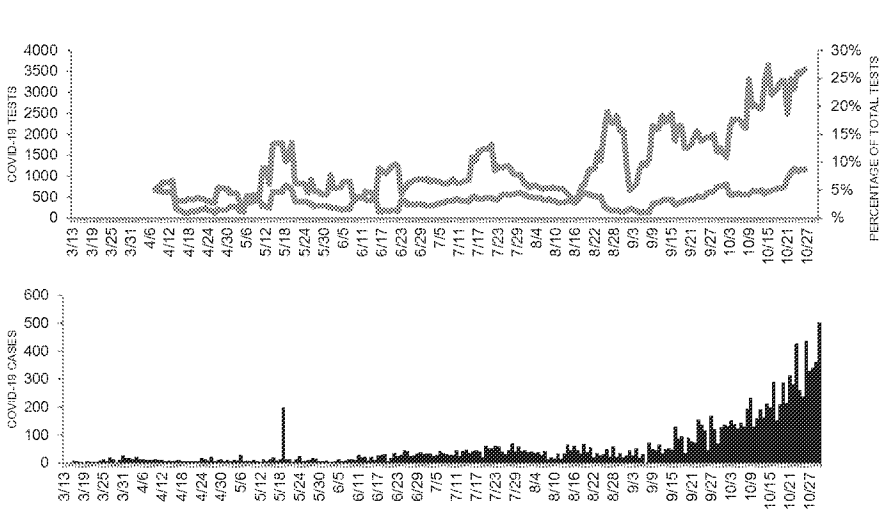
RISK FACTORS

POPULATION DENSITY	17 per sq. mi.
% SENIORS	15%
CRUDE CVD PREVALENCE	3.0%

Sources: Cases - USAFacts.org; ED visits - ESSENCE; COVID-19 test results - CELR (COVID Electronic Lab Reporting) state health department-reported data and HHS Protect laboratory data (provided directly to Federal Government from public health labs, hospital labs, and commercial labs)
 Testing & hospital data based on best available data in HHS Protect

* Most recent several days of testing data is incomplete until all test results come in; testing date is by date the result was received

TRENDS IN WYOMING



Daily Tests Completed (7-day avg.)
 % Positivity Rate (by result date 7-day avg.)
 Daily COVID-19 Cases

COVID-19 SNAPSHOT

POSITIVITY RATE	4.8%
NEW CASES PER 100K / DAY	4.1 (week ending 10/27)
TESTING PER 100K / DAY	13.1 (week ending 10/27)
BED UTILIZATION	49%

WEEK-ON-WEEK CHANGES

POSITIVITY RATE	-1.2%
INCIDENCE	+2.8%
TESTING PER 100K / DAY	+9%
BED UTILIZATION	+3%

RISK FACTORS

POPULATION DENSITY	6 per sq mi
% SENIORS	17%
CRUDE CVD PREVALENCE	3.7%

Sources: Cases - USAFacts.org; ED visits - ESSENCE; COVID-19 test results - CELR (COVID Electronic Lab Reporting) state health department-reported data and HHS Protect laboratory data (provided directly to Federal Government from public health labs, hospital labs, and commercial labs)
 Testing & hospital data based on best available data in HHS Protect

* Most recent several days of testing data is incomplete until all test results come in; testing date is by date the result was received

Not enough CLI syndromic surveillance data to display